



This is your
bus, please
BOARD NOW

MAPS / LifeLine

(Distributed Support System)

Stefan Carmien & Andy Gorman
October 12, 2003
UbiHealth Workshop

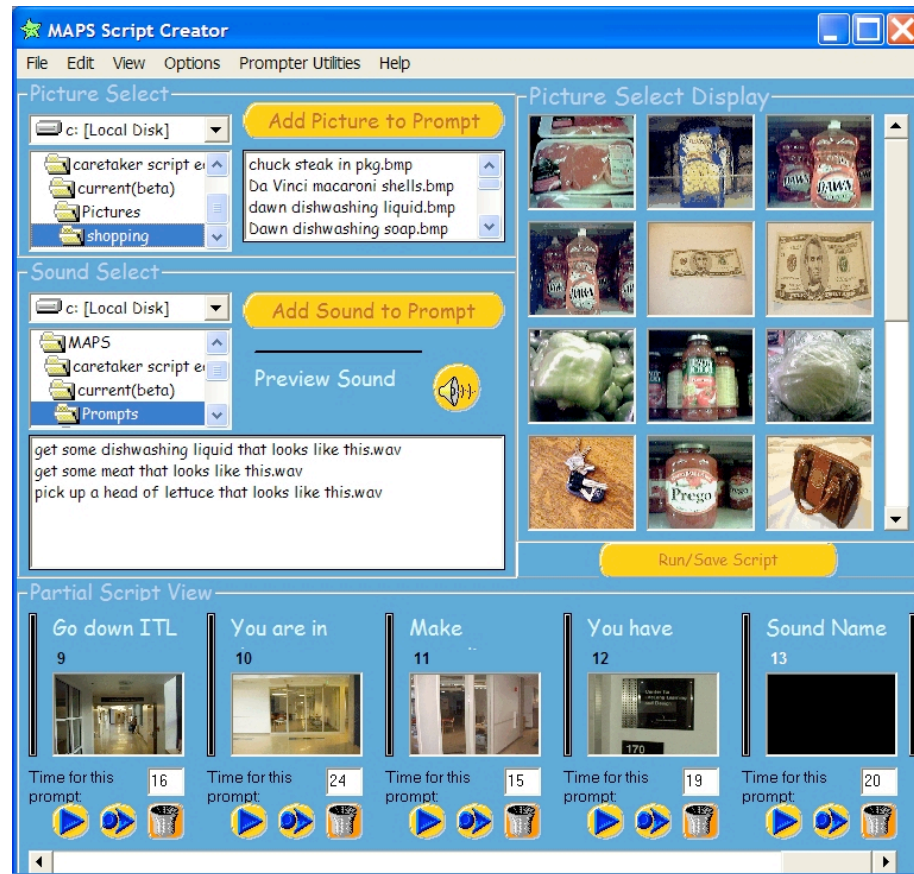


CLever: Building Cognitive Levers
to help people help themselves

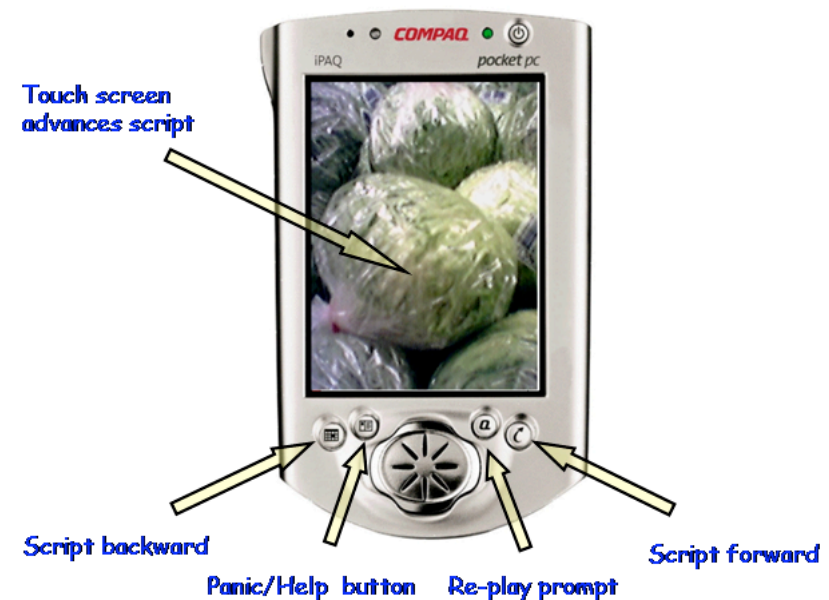
Center for LifeLong Learning & Design
University of Colorado at Boulder



MAPS Prototype



MAPS script editor (caregiver interface)



MAPS Prompter (user interface)

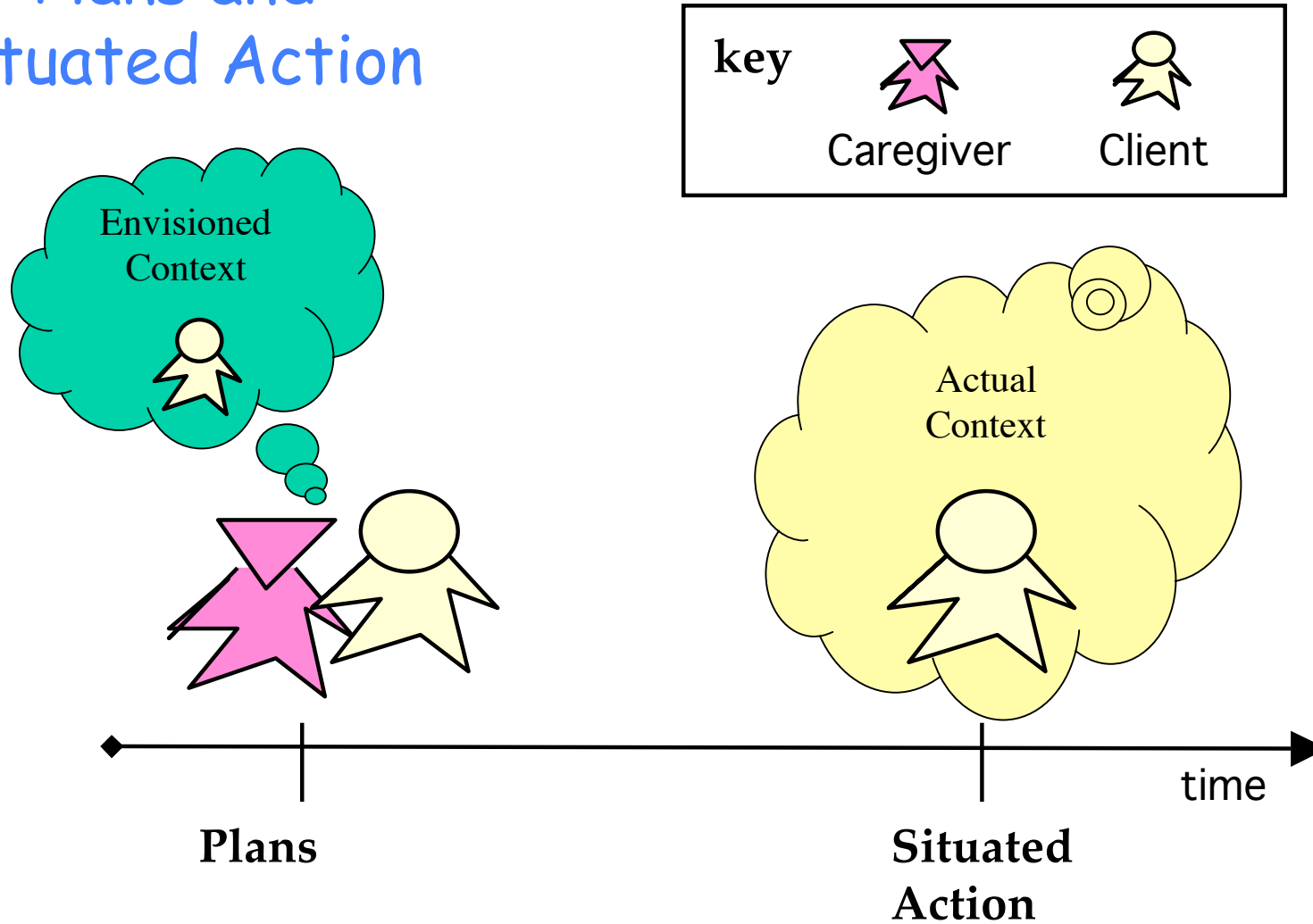


CLever: Building Cognitive Levers
to help people help themselves

Center for LifeLong Learning & Design
University of Colorado at Boulder



Plans and Situating Action

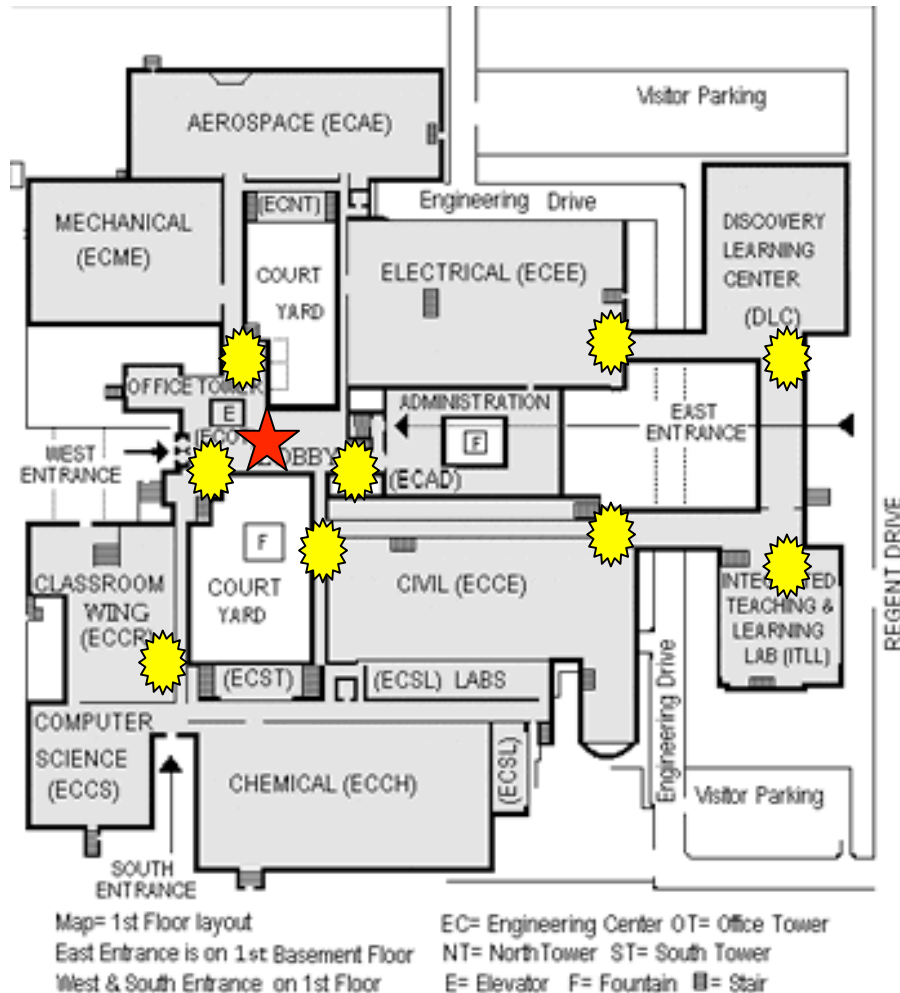


CLever: Building Cognitive Levers
to help people help themselves

Center for LifeLong Learning & Design
University of Colorado at Boulder

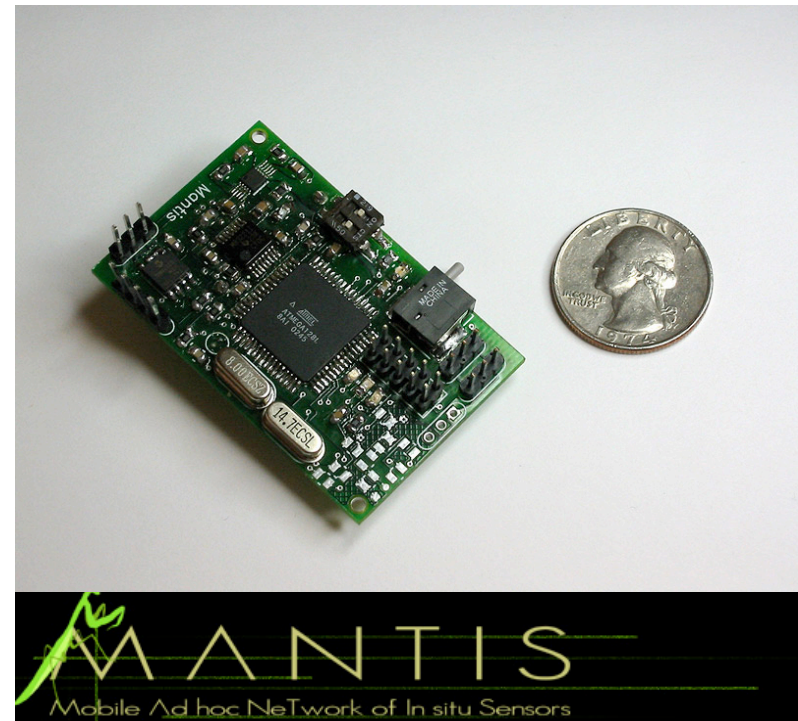


Sensor Networks



MANTI are small networked computers that can:

- incorporate sensors (e.g., GPS)
- communicate with each other



CLever: Building Cognitive Levers
to help people help themselves

Center for LifeLong Learning & Design
University of Colorado at Boulder



What you will see now...

- Plan Execution
- Real-time Update of Client Status
- Automatic Detection and Notification of Errors
- Client's Ability to Signal Caregiver

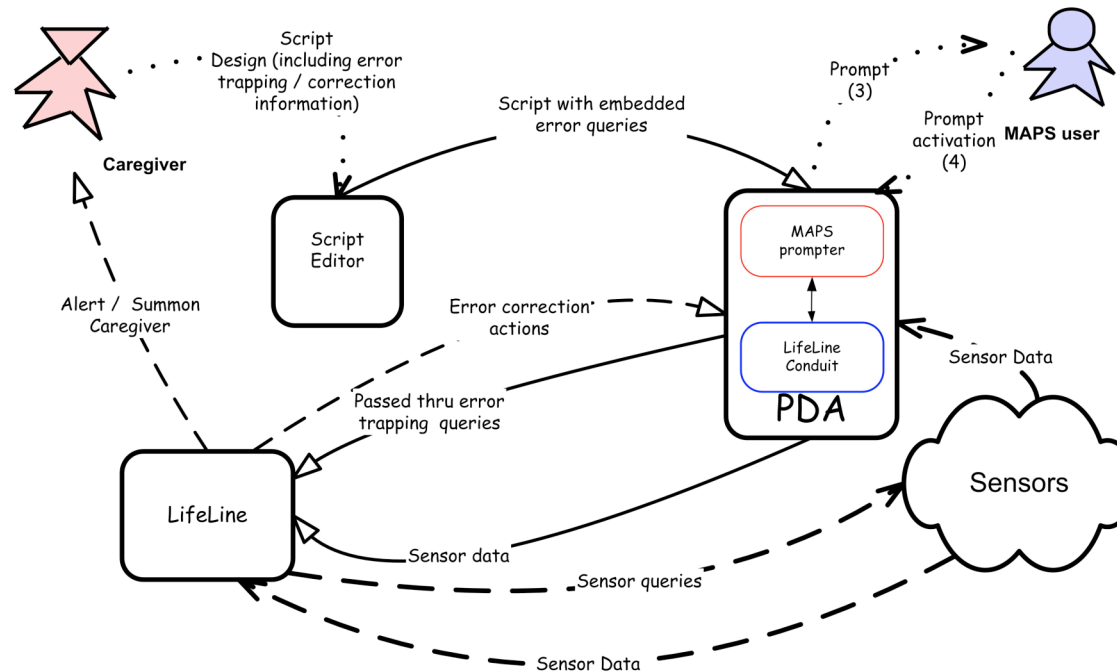


CLever: Building Cognitive Levers
to help people help themselves

Center for LifeLong Learning & Design
University of Colorado at Boulder



LifeLine / MAPS error topology



CLever: Building Cognitive Levers
to help people help themselves

Center for LifeLong Learning & Design
University of Colorado at Boulder



MAPS / LifeLine

(Distributed Support System)

Stefan Carmien & Andy Gorman
October 12, 2003
UbiHealth Workshop



CLever: Building Cognitive Levers
to help people help themselves

Center for LifeLong Learning & Design
University of Colorado at Boulder





CLever: Building Cognitive Levers
to help people help themselves

Center for LifeLong Learning & Design
University of Colorado at Boulder

